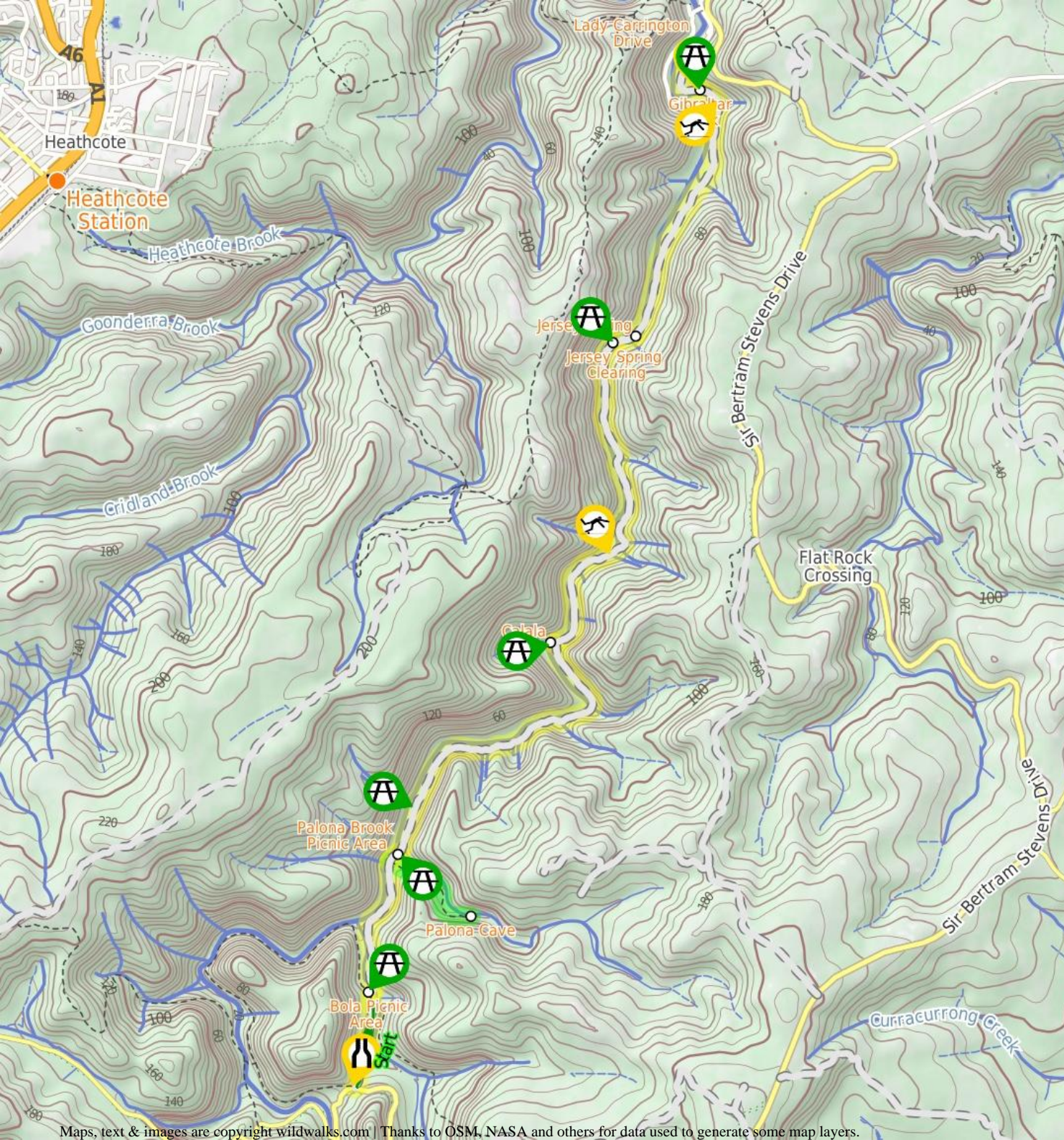


Lady Carrington Drive



3 hrs 45 mins

Moderate track

3

9.7 km One way

▲ 266m

This walk follows the historic Lady Carrington Drive alongside the Hacking River. The old road is closed to traffic and provides a great way for walkers (and mountain bikers) to explore the richness of Royal National Park. You can explore the fantastic natural sandstone rock formations, historical artefacts, read the information signs, rest in the picnic areas and appreciate the magnificent native trees. You may well be lucky enough to spot lyrebirds. The southern end has the steepest sections with the walk becoming generally flatter as you head north.

0m

Royal National Park

Bola Picnic Area

Bola Picnic Area, in the Royal National Park, is at the intersection of Lady Carrington Drive and Forest Island Track, beside Bola Creek. You will find a small clearing with a picnic table in a gorgeous rainforest setting, surrounded by tall trees and ferns scattered through the area. There is no car access to the picnic area, making this a lovely quiet area.

Palona Cave

Palona Cave is off Lady Carrington Drive, north of Bola Picnic Area, in the Royal National Park. Palona Cave is a large limestone overhang with a few cave decorations such as columns and stalactites. Being open to the environment, the cave has some green moss and is not reminiscent of other pristine white limestone caves. The cave is a unique feature for the area and is well worth allowing time to explore.

Palona Brook Picnic Area

Palona Brook Picnic Area is found on the north side of Palona Brook along side the old Lady Carrington Drive. The picnic area is home to a couple of wooden picnic tables and is next to the steep gully and culvert that Palona Brook flows through. A pleasant spot to rest when visiting the nearby sandstone cove or exploring the old road.

Calala

The signposted 'Calala' clearing lies between the old Lady Carrington Drive and the Hacking River. The large clearing has a picnic table and plenty of shade from the surrounding trees. There is an informal steep track that provides access to a small sandy beach on the Hacking River, making this a lovely spot to rest on a warm day.

Jersey Spring Clearing

The Jersey Spring Clearing is an open grassy area between the old Lady Carrington Drive and the Hacking River. The clearing is not formally named but is just south of the Jersey Spring. This is a great area to stop, rest and enjoy the journey along the old road

Before You walk

Bushwalking is fun and a wonderful way to enjoy our natural places. Sometimes things go bad, with a bit of planning you can increase your chance of having an enjoyable and safer walk. Before setting off on your walk check

- 1) Weather Forecast ([BOM Metropolitan District](#))
- 2) Fire Dangers ([Greater Sydney Region](#))
- 3) Park Alerts ([Royal National Park](#))
- 4) Research the walk to check your party has the skills, fitness and equipment required
- 5) Agree to stay as a group and not leave anyone to walk solo

Think before you TREK

The 'Think before you TREK' program developed by NSW Police & NPWS promotes the benefits of planning ahead for your bushwalking trip by using an easy to remember acronym:

- T** Take adequate supplies of food, water, navigation and first aid equipment.
- R** Register your planned route and tell friends and family when you expect to return.
- E** Emergency beacon (PLB's) should be carried on walks with significant gaps in mobile coverage (check terrain profile).
- K** Keep to your planned route and follow the map and walking trails.

Topo Maps

The maps provided on wildwalks are helpful, but there are times where you may need maps covering a broader area. Maps that cover this walk include;

- 1:25 000 Map Series:**91294S OTFORD, 91294N PORT HACKING
1:100 000 Map Series:9129 PORT HACKING

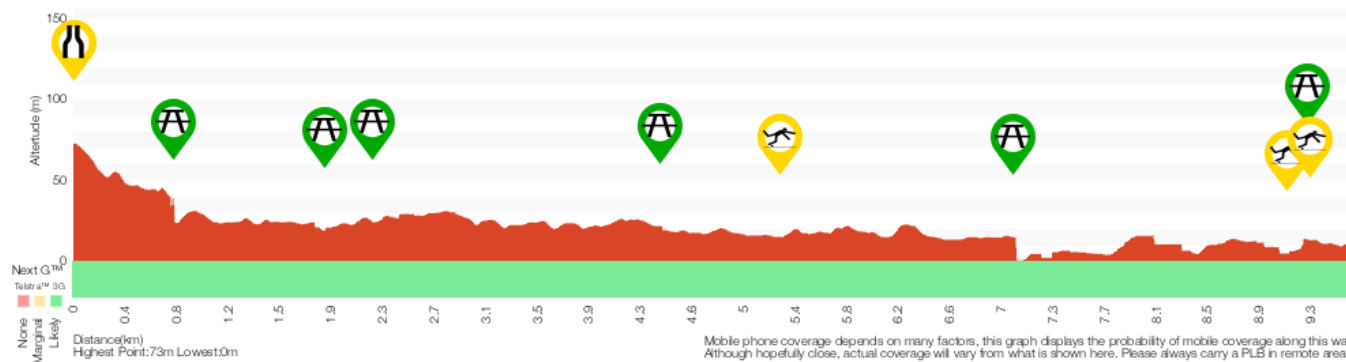
Grade

This walk has been graded using the AS 2156.1-2001. The overall grade of the walk is determined by the highest classification along the whole track.



Grade 3/6
Moderate track

Length	9.7 km One way
Time	3 hrs 45 mins
Quality of track	Clear and well formed track or trail (2/6)
Signs	Directional signs along the way (3/6)
Experience Required	Some bushwalking experience recommended (3/6)
Weather	Weather generally has little impact on safety (1/6)
Infrastructure	Generally useful facilities (such as fenced cliffs and seats) (1/6)



Are you ready to have fun?

Please ensure you and your group are well prepared and equipped for all possible hazards and delays. Check park closures, weather information and Fire Danger Rating before setting out. Optional side trips and alternate routes noted are not included in this walk's overall grade, length or time estimate. Please allow extra time for resting and exploring areas of interest. The authors, staff and owners of wildwalks take care in preparing this information but will not accept responsibility for any inconvenience, loss or injury you may experience. Please take care, have fun - Happy Walking.

Getting there Traveling by is the only practical way to get to Int of Lady Carrington Drive and Sir Bertam Stevens Drive (gps: -34.1488, 151.0303). Traveling by car is the only practical way to get back from Lady Carrington Drive gate (Willow Tree) (gps: -34.0793, 151.0552). Car: A park entry fee is required for driving into the park.

Car: Parking fees apply in the area.

Find up to date and more information including; travel directions, weather, park closures and walker feedback at <http://wild.tl/lcd>

0 | Int of Lady Carrington Drive and Sir Bertam Steven

(730 m 13 mins) From the car park on Sir Bertram Stevens Drive (500m north of the intersection with McKell Ave), this walk heads between the boulders (on the western edge of the car park) then leads downhill to get around to the back of the locked gate (56cm high) and sandstone wall. From here the walk follows the wide dirt Lady Carrington Drive trail downhill past the 'Forest Path' information sign and continues mostly downhill for just over 600m through the forest to come to a three-way intersection signposted with the 'Walumarra Track'.

Continue straight: From the intersection, this walk heads downhill along the main wide dirt trail, keeping the valley to the right. The trail bends right and leads down into the valley for about 60m passing the 'red cedar' information sign to come to the signposted three-way intersection with 'The Forest Path' beside the the Bola Creek picnic area, just before the creek.

0.73 | Bola Picnic Area

Bola Picnic Area, in the Royal National Park, is at the intersection of Lady Carrington Drive and Forest Island Track, beside Bola Creek. You will find a small clearing with a picnic table in a gorgeous rainforest setting, surrounded by tall trees and ferns scattered through the area. There is no car access to the picnic area, making this a lovely quiet area.

0.73 | Bola Picnic Area

(1 km 21 mins) Continue straight: From the intersection, this walk follows the 'Audley 9km' arrow gently downhill along the wide trail to cross the culverted Bola Creek. The trail then bends left and leads steeply up for about 200m where the trail then gently undulates through the forest for about 800m before coming to the faint intersection, with the signposted 'Limestone Cave' bush track (the timber sign is behind a tree on the left, before the signposted 'Palona Brook').

1.77 | Optional sidetrip to Palona Cave and Waterfall

(780 m 19 mins) Turn right: From the intersection, this walk follows the 'Limestone Cave 1.6km' arrow along the track, heading up the hill and away from the road. The walk continues up a long hill, winding through dense forest for a short while before flattening out and continuing along the side of the hill. The walk winds through the bush and passes several rock overhangs and outcrops either side of the track, as the walk make its way along to the Palona Caves at the end of the track. At the end of this side trip, retrace your steps back to the main walk then Turn right.

1.77 | Palona Cave

Palona Cave is off Lady Carrington Drive, north of Bola Picnic Area, in the Royal National Park. Palona Cave is a large limestone overhang with a few cave decorations such as columns and stalactites. Being open to the environment, the cave has some green moss and is not reminiscent of other pristine white limestone caves. The cave is a unique feature for the area and is well worth allowing time to explore.

1.77 | Int Palona Cave Trk and Lady Carrington Drive

(110 m 2 mins) Continue straight: From the intersection, this walk heads downhill along the main wide trail as it soon bends to the right. After about 50m the trail crosses the signposted and culverted 'Palona Brook' to come to a picnic area (on the right-hand side).

1.88 | Palona Brook Picnic Area

Palona Brook Picnic Area is found on the north side of Palona Brook along side the old Lady Carrington Drive. The picnic area is home to a couple of wooden picnic tables and is next to the steep gully and culvert that Palona Brook flows through. A pleasant spot to rest when visiting the nearby sandstone cove or exploring the old road.

1.88 | Palona Brook Picnic Area

(2.6 km 53 mins) Continue straight: From beside the Palona Brook picnic area, this walk heads gently uphill along the wide trail away from 'Palona Brook' keeping the main valley to the left. The trail leads through the forest for about 400m to pass an old picnic table (about 20m off the left-hand side of the trail) then about 600m later the trail leads past a small metal plaque (on a rock) reminding of the tragic loss of Alan Rendell, who died fighting bushfires here in 1988. The walk now continues gently undulating along the wide trail for another 400m to pass signposted (and culverted) 'Burunda Brook' in a pleasant rainforest environment. The trail continues to lead as it winds through the forest for just over 1km, passing the site of a repaired landslide, crossing a few culverted creeks to then come to the sign posted and large 'Calala' clearing (on the left).

4.43 | Calala

The signposted 'Calala' clearing lies between the old Lady Carrington Drive and the Hacking River. The large clearing has a picnic table and plenty of shade from the surrounding trees. There is an informal steep track that provides access to a small sandy beach on the Hacking River, making this a lovely spot to rest on a warm day.

4.43 | Calala

(2.6 km 51 mins) Continue straight: From 'Calala', this walk follows the main wide management trail (old road), keeping the Hacking River to the left. Over the next 1km, the trail crosses two culverted creeks (Murrindum Brook and Dirijiri Brook) before crossing the more distinct valleys of Birumba and Kobado Brooks. (Kobado Brook has an old small sandstone water trough). The walk then continues winding along the old Lady Carrington Drive, passing over several more culverted creeks and coming down to an area with several palm groves and a large clearing (on the left). The clearing is not signposted but is known as Jersey Spring clearing and has a picnic table.

7.04 | Jersey Spring Clearing

The Jersey Spring Clearing is an open grassy area between the old Lady Carrington Drive and the Hacking River. The clearing is not formally named but is just south of the Jersey Spring. This is a great area to stop, rest and enjoy the journey along the old road

7.04 | Jersey Spring clearing

(130 m 3 mins) Continue straight: From the clearing, this walk follows old Lady Carrington Drive management trail uphill keeping the Hacking River to

the left. After about 100m the trail leads past a 'Jersey Springs' information sign and comes to the two sandstone sandstone 'Jersey Spring' troughs.

7.17 | Jersey Spring

The Jersey Spring is beside the old Lady Carrington Drive in the Royal National Park. The permanent spring feeds into two sandstone troughs, built in 1892 to provide water for horses and people traveling along the road. The troughs are still fed by the same spring (although it has moved overtime and the water is no longer suitable for drinking). The springs are named after Rt. Hon. Victor George (Earl of Jersey), the 17th governor of NSW. [More info.](#)

7.17 | Jersey Spring

(2.1 km 39 mins) Continue straight: From 'Jersey Spring', this walk follows the old road, keeping the Hacking River to the left. The walk continues along the trail as it gently undulates and winds along the side of the Hacking River for just shy of 2km to pass over Mullion Brook on an old sandstone culvert and past a series of palm groves. About 100m after Mullion Brook this walk comes to the picnic table at Gibraltar Rock with a cobblestone section of trail below the overhang.

9.23 | Gibraltar Rock

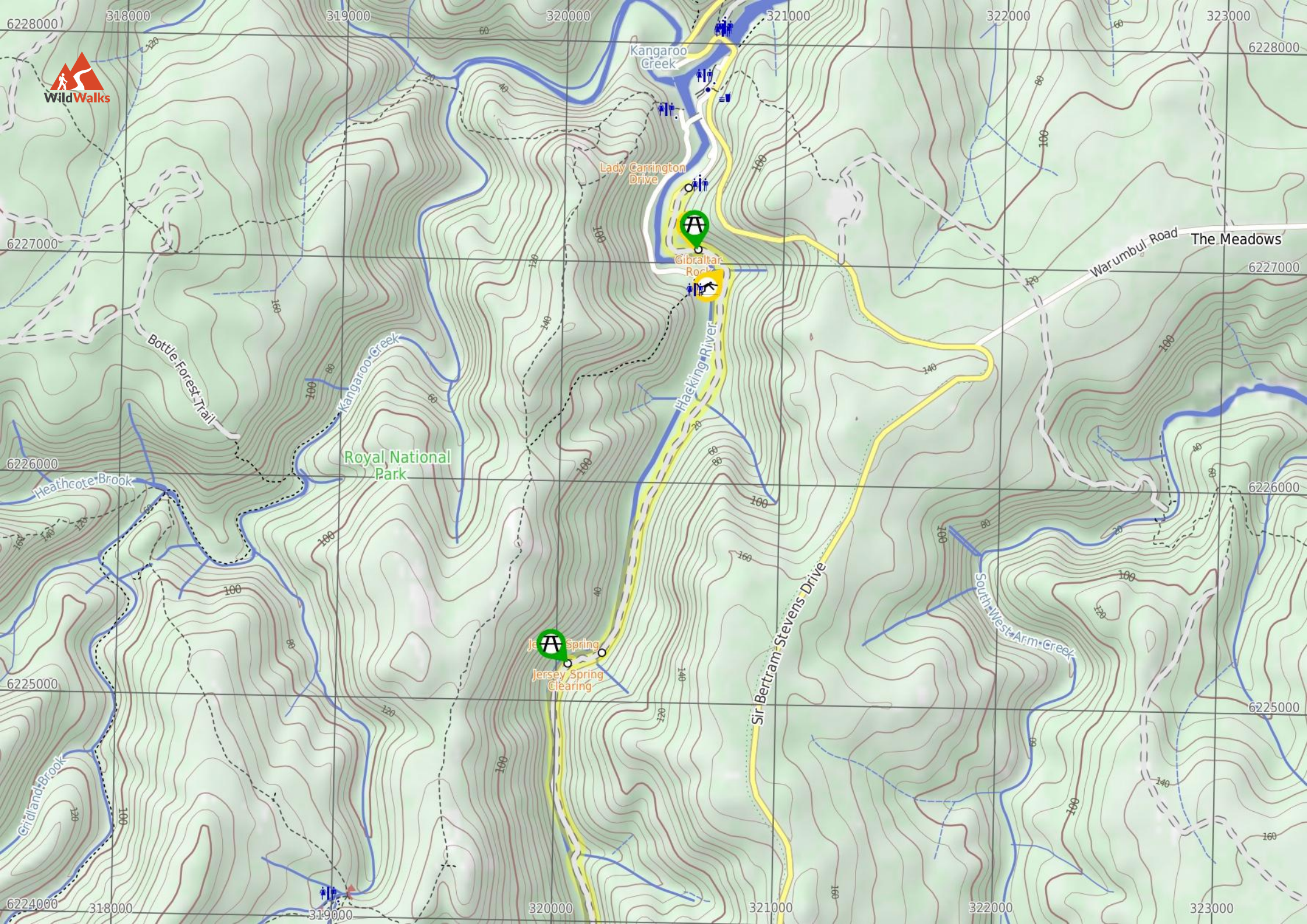
Gibraltar Rock, Royal National Park, is a sandstone overhang found near the northern end of Lady Carrington Drive. The old road passes under the rocks and is home to a small section of sandstone cobblestone. At this point, the old road offers great views of the Hacking River and across to Wattle Forest picnic area. These and many other sandstone formations, together with the history, make this old road quite interesting to explore. There is a picnic table under the overhang.

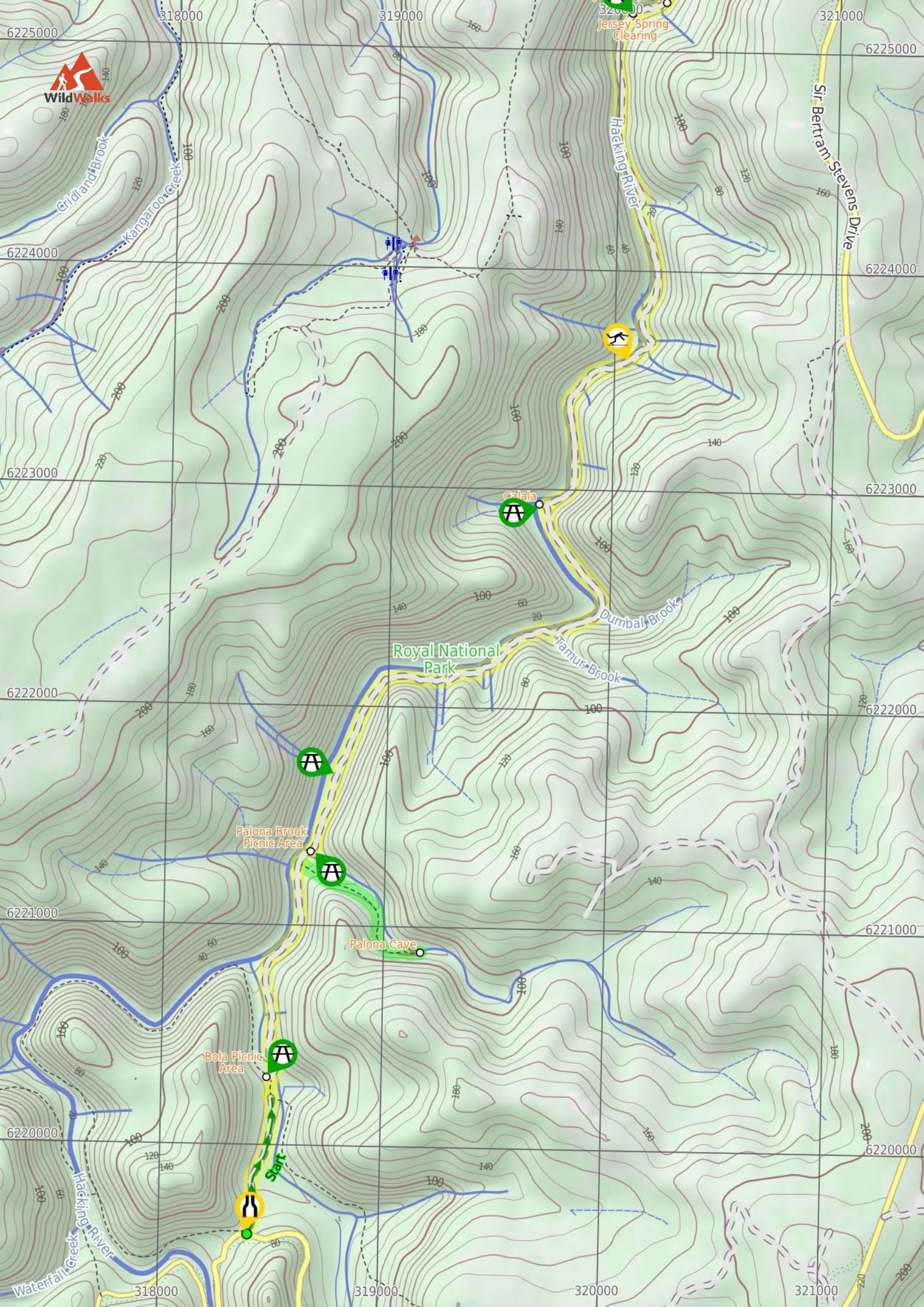
9.23 | Gibraltar Rock

(430 m 8 mins) Continue straight: From the Gibraltar Rocks, this walk follows the management trail gently downhill (keeping the river to the left), off the cobble stoned area. The walk continues along the dirt trail for about 400m, to head around the locked gate and come to an intersection just past the 'Lady Carrington Drive' sign.

9.65 | Lady Carrington Drive

Opened in 1886 by Lady Carrington, this road was formally named 'Lady Carrington Road' (later changed to 'drive'), and started on the southern side of the then newly constructed Audley weir. The road became popular among people exploring the region. The road follows the Hacking River's east bank and then Bola Creek to Sir Bertram Stevens Drive. Much history has been preserved, with several drinking troughs still filling with water and many sandstone retaining walls still standing. The brooks that the old road crosses have been named using the traditional names of birds, the following is a list with the English name in brackets. Mullion (Eagle), Wurrul (Bee Eater), Burowa (Bustard), Karonga (White Crane), Gorra Worra (Laughing Jackass), Buralga (Native Companion), Kobardo (Parrot), Birumba (Plover), Dirijiri (Wagtail), Murrindum (Quail), Dumbal (Crow), Tamur (Bronze winged Pigeon), Burunda (Swan), Karani (Duck), Palona (Hawk) Brooks.





Summary navigation sheet for the Lady Carrington Drive



km	From	Up/Dwn	Length	Initial directions (Use full tracknotes and maps for more detail)
0.00	Int of Lady Carrington Drive and Sir Bertam Stevens Drive -34.1488,151.0303 (GR Otford, 184196)	1 -25	730 m 13 mins	From the car park on Sir Bertram Stevens Drive (500m north of the intersection with McKell Ave), this walk heads between the boulders (on the western edge of the car park) then leads downhill to get around to the ba...
0.73	Bola Picnic Area -34.1425,151.0318 (GR Otford, 185203)	25 -42	1 km 21 mins	Continue straight: From the intersection, this walk follows the 'Audley 9km' arrow gently downhill along the wide trail to cross the culverted Bola Creek.
1.77	Int Palona Cave Trk and Lady Carrington Drive -34.1339,151.0327 (GR Otford, 186213)	69 -9	780 m 19 mins	Optional sidetrip to Palona Cave and Waterfall. Turn right: From the intersection, this walk follows the 'Limestone Cave 1.6km' arrow along the track, heading up the hill and away from the road.
1.77	Int Palona Cave Trk and Lady Carrington Drive -34.1339,151.0327 (GR Otford, 186213)	1 -4	110 m 2 mins	Continue straight: From the intersection, this walk heads downhill along the main wide trail as it soon bends to the right.
1.88	Palona Brook Picnic Area -34.1331,151.0333 (GR Otford, 186213)	96 -102	2.6 km 53 mins	Continue straight: From beside the Palona Brook picnic area, this walk heads gently uphill along the wide trail away from 'Palona Brook' keeping the main valley to the left.
4.43	Calala -34.119,151.0448 (GR Port Hacking, 197229)	80 -74	2.6 km 51 mins	Continue straight: From 'Calala', this walk follows the main wide management trail (old road), keeping the Hacking River to the left.
7.04	Jersey Spring clearing -34.0988,151.0497 (GR Port Hacking, 201252)	5 -5	130 m 3 mins	Continue straight: From the clearing, this walk follows old Lady Carrington Drive management trail uphill keeping the Hacking River to the left.
7.17	Jersey Spring -34.0984,151.051 (GR Port Hacking, 202252)	47 -54	2.1 km 39 mins	Continue straight: From 'Jersey Spring', this walk follows the old road, keeping the Hacking River to the left.
9.23	Gibraltar Rock -34.0818,151.0557 (GR Port Hacking, 206271)	11 -6	430 m 8 mins	Continue straight: From the Gibraltar Rocks, this walk follows the management trail gently downhill (keeping the river to the left), off the cobble stoned area.



This page is designed to give you a sense of the facilities that help improve access for people with disabilities or mobility restrictions. See tracknotes and map for navigation, point of interest and other information. See the Accessibility Details page for specific information about each facility.

Parking: There are 0 designated accessible parking areas on this walk.

Toilets: There are 0 toilets on this walk.

Seats: There are 6 seats on this walk. They are on average 1850m apart, with a maximum gap of 2640m.

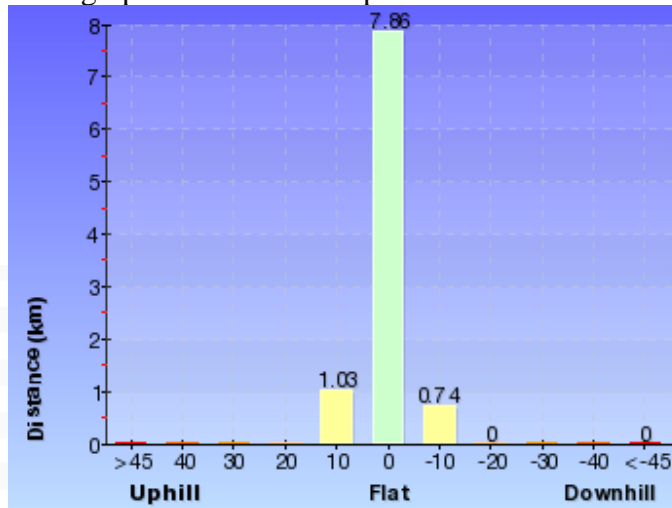
Surface

This walk follows a 5.5m wide dirt trail (old road) for most of the length. All creeks have bridges (culverts). The trail becomes boggy after rain. There are two pinch points, the narrowest is at the southern end at 56cm.

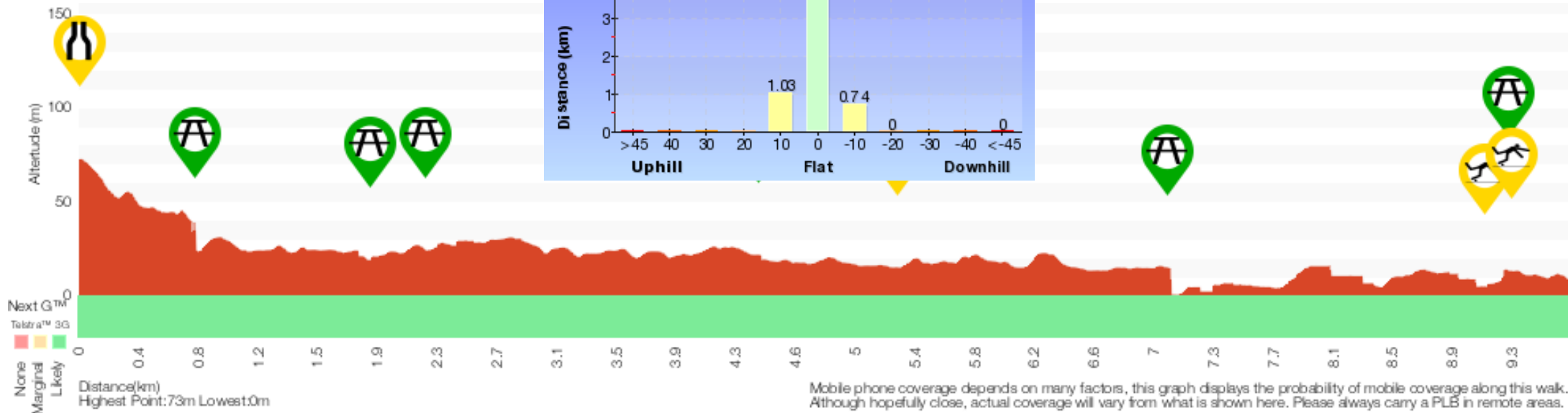
Steepness

The majority of this walk is gently undulating, although there are some very steep sections at the southern end. If using a wheelchair, assistance is most likely to be required on some of the hills.

This graph shows how steep the track is.



3 Grade 3/6 Moderate track	
Length	9.7 km One way
Time	3 hrs 45 mins
Quality of track	Clear and well formed track or trail (2/6)
Signs	Directional signs along the way (3/6)
Experience Required	Some bushwalking experience recommended (3/6)
Weather	Weather generally has little impact on safety (1/6)
Infrastructure	Generally useful facilities (such as fenced cliffs and seats) (1/6)



Mobile phone coverage depends on many factors, this graph displays the probability of mobile coverage along this walk. Although hopefully close, actual coverage will vary from what is shown here. Please always carry a PLB in remote areas.



1 Pinch Point (10m)
Pinchpoints between rocks. The widest space is between the 5th and 6th rock from the fence (at the west side of car park) is 56cm wide.



2 Picnic Table (750m)
A timber slat picnic table and bench seat. The table is 76cm high, 91cm deep and 2.12m wide. The seats are 44cm high, 30cm deep and 2.12m wide (no backrest).



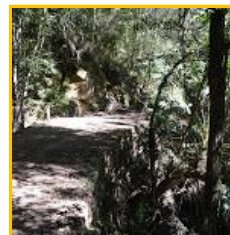
3 Picnic Table (1890m)
A timber slat picnic table and bench seat. The table is 76cm high, 91cm deep and 2.12m wide. The seats are 44cm high, 30cm deep and 2.12m wide (no backrest).



4 Picnic Table (2250m)
A timber slat picnic table and bench seat. The table is 68cm high, 93cm deep and 2.14m wide. The seats are 34cm high, 31cm deep and 2.14m wide (no backrest).



5 Picnic Table (4410m)
A timber slat picnic table and bench seat. The table is 77cm high, 91cm deep and 2.1m wide. The seats are 39cm high, 30cm deep and 2.1m wide (no backrest).



6 Trip Hazard (5310m)
A number of the culverts crossing creeks along Lady Carrington Drive have unfenced and unmarked edges. The potential fall is significant enough to cause serious injury or death. Stay well clear of the edges.



7 Picnic Table (7050m)
A timber slat picnic table and bench seat. The table is 77cm high, 93cm deep and 2.1m wide. The seats are 42cm high, 30cm deep and 2.1m wide (no backrest).



8 Trip Hazard (9110m)
There are a number of tall stone walls and culverts crossing creeks along Lady Carrington Drive that are unfenced and have unmarked edges. The potential fall is significant enough to cause serious injury or death. Stay well clear of the edges.



9 Picnic Table (9260m)
A timber slat picnic table and bench seats. The table is 79cm high, 91cm deep and 2.1m wide. The seats are 40cm high, 30cm deep and 2.1m wide (no backrest).



10 Trip Hazard (9280m)
An 8cm trip hazard between dirt and cobblestones.